

# THE ROGER WILLIAMS FAMILY ASSOCIATION

2016-2017 No. 103

Incorporated January 30, 1906  
Providence, Rhode Island  
[www.rogerwilliams.org](http://www.rogerwilliams.org)



## A MESSAGE FROM THE PRESIDENT

Dear Cousins,

Welcome to our new members. This message will be my last as it starts my final year of a three year term. I feel honored to have served as your thirty-sixth President of our Roger Williams Family Association which began in 1888.

As those of you who have attended our monthly programs know, we have initiated a plan to encourage our young cousins to participate in these programs which have been expertly arranged by our first vice-president, Kate Lambert. The Association has paid for any costs for their admission to these programs.

Another new effort that was begun two years ago was to use name tags for those members who regularly attend our functions. This made it easier for new members to recognize their new found cousins and to follow their connective family lines.

Two years ago we were contacted by the Executive Director of the Rhode Island Foundation and discussed the absence of educating the school children in the Providence area of the Founder of Providence, our Grandfather Roger Williams. He asked if we would participate in an initiative to correct this oversight. As the meetings were to take place in the Providence area, I appointed my daughter, Susan Wordell Jacquet of Newport, RI, a Life Member, to cover these meetings. With the funding from John and Leticia Carter and oversight by the Rhode Island Foundation, Nami Studios and Brown University, an educational website is being developed to explore the life of Roger Williams. The site will include maps, letters, writings, artifacts and other materials that showcase the work, influence, philosophies and leadership of Roger Williams as well as his unique relationship with the Native American Tribes in the area. The website will also include lesson plans for educators as well as activities to engage and inform students. In addition "The Roger Williams Initiative Website" will include information of the Roger Williams Family Association with an interactive section focusing on our Seal and what it might represent, our mission statement, along with photographs of Roger's great grandchildren. The picture was taken at our biannual pilgrimage to Margaret's Rock, the shelter where for fourteen weeks Roger was nursed back to good health in the wilderness by the Wampanoag Medicine Woman, Margaret, during his banishment from Massachusetts Bay Colony.

The Foundation plans to launch this website in October 2016. The committee is working with the Rhode Island Dept. of Education to integrate the website into the classroom curriculum. In addition, a scholarship program is planned. I believe this is a first step in bringing well deserved historic recognition of our Grandfather to fill a void in the education of our youth. Thank you, Susan, for a job well done.

Finally, I want to leave you with a message of what Roger Williams means to me. My Great Grandfather, Roger Williams has taught me to strongly pursue my dreams. His dedication to fight for causes no matter how detrimental to his own life was a strong moral lesson taught to a young boy. Roger Williams believed that no man should be molested for his conscience and that people should have the right to worship as they choose. He lived both in England and the New World at a time of struggle for freedom of religious rights, a time when those who descended from the National Church were persecuted, charged with treason and, in Roger's case, about to be hanged.

Roger Williams fled from Massachusetts Bay Colony in the winter wilderness of Southern Massachusetts and was saved from death by his friend Massasoit, Chief of the Wampanoag Indians, to emerge in the spring and establish a new Colony of Providence Plantations. There he established a settlement based on a new idea that a government by the people can survive and that religion can flourish through many faiths and remain alive through individual consciences. In Roger's own words he said, "I desire it might be a shelter for persons distressed for conscience."

*Continued after feature article*

# CALENDAR

September 2016 - June 2017

*The RWFA will pay admission fees for all children 12 and under.*

**SATURDAY, SEPTEMBER 10, 2016 11:00 AM**

## **THE GENERAL NATHANAEEL GREENE HOMESTEAD**

We will gather at 11:00am to tour the Nathanael Green Homestead, 50 Taft Street in Coventry, RI. Known as Spell Hall, this was the home of Revolutionary War General Nathanael Greene from 1770 to 1783. \$2. Following our tour and a brief meeting, we will have lunch at the Cowesett Inn. RSVP by September 1 to 401-567-0088 or [katemospaw@aol.com](mailto:katemospaw@aol.com).

*Directions: From Rte. 95, take Exit 7 to Warwick W/Coventry; right onto New London Tpk.; left onto Arnold Rd.; right onto RI-3N; left onto Pilgrim Ave.; third right onto Centre St.; left onto Taft St.*

**SATURDAY, OCTOBER 1, 2016 10:45 AM**

## **FLORENCE GRISWOLD MUSEUM AND WEE FAERIE VILLAGE**

Be sure and bring the children along to the Florence Griswold Museum, 96 Lyme Street in Old Lyme, CT at 10:45am to visit the Museum grounds, home to the Wee Faerie Village, where we will explore over 30 handcrafted, faerie-sized homes based on this year's theme: *A Flutter in Time – Faeries Around the World and Across the Ages*, as well as the Griswold House Museum, home of American Impressionism and the special exhibitions in the Kriebler Gallery. This is a visit to bring a smile to the faces of young and old. \$12. We will have lunch across the street at the Old Lyme Inn. The restaurant requires a headcount at least two weeks prior to the event, so RSVP by September 15 to 401-567-0088 or [katemospaw@aol.com](mailto:katemospaw@aol.com).

*Directions: From I-95 South, take Exit 70; right at bottom of ramp; Museum is 2nd building on the left. From I-95 North, take Exit 70; left at bottom of ramp onto Rte. 156; right at 2nd light onto Halls Rd.; continue to the end, then left onto Lyme St.; Museum is 2nd building on the left.*

**SUNDAY, OCTOBER 30, 2016 11:00 AM**

## **FOUNDER'S DAY SERVICE AT FIRST BAPTIST CHURCH IN AMERICA**

We will observe Founder's Day at First Baptist Church in America at 75 North Main Street in Providence, RI at the 11:00am service. Following coffee and conversation in the church basement after the service and a brief meeting, we will proceed to lunch at Gregg's Restaurant. RSVP by October 21 to 401-567-0088 or [katemospaw@aol.com](mailto:katemospaw@aol.com).

*Directions: First Baptist Church in America is located at the corner of North Main and Waterman Streets. From I-95 North or South take Exit 22A, following the signs to Downtown and Memorial Boulevard; follow Memorial Blvd. to the river; left onto Washington St.; the church is visible directly ahead. From the west, follow Rte. 6 to the exit for Downtown Providence to Memorial Blvd, etc. Parking can be difficult so plan arrival time accordingly.*

**SATURDAY, NOVEMBER 19, 2016 11:00 AM**

## **MUSEUM OF WORK AND CULTURE**

We will gather at 11:00am at the Museum of Work and Culture, 255 Main Street in Woonsocket's historic Market Square. The Museum tells the story of French Canadian immigrants who left Quebec to come to work in the mills and factories of the city. \$6. Following our guided tour we will have lunch at nearby Ciro's Tavern. RSVP by November 11 to 401-567-0088 or [katemospaw@aol.com](mailto:katemospaw@aol.com).

*Directions: From Providence and south, take I-95 North and exit to Rte. 146 North. Follow Rte. 146 to Rte. 146A; Rte. 146A will bring you to Park Square. Continue straight at that set of lights and the next set. With Union Cemetery on your left, take a right at the light onto South Main St. Continue into Market Square. The Museum will be on your right after you cross the river.*

*Continued on next page*

**SATURDAY, DECEMBER 10, 2016 2:00 PM**  
**HOLIDAY PARTY**

We will hold our annual holiday party and reception at the festively decorated home of Marilyn and Clifford Brown, 180 Brown Street in Providence, RI. We will enjoy a seasonal music presentation, followed by Christmas Carols, a short business meeting, and our traditional Victorian tea.

*Directions: From Rte. 95 North or South, take Exit 22A following signs to Downtown Providence and Memorial Blvd.; from the west, follow Rte. 6 to exit for Downtown Providence and Memorial Blvd. In both cases, follow Memorial Blvd. to the river. Turn left onto Washington St., which becomes Waterman St. Proceed up the hill to Brown St., just beyond the summit. Turn left and proceed 7 blocks to Keene St. The Brown residence is on the far left (northwest) corner of Brown and Keene.*

**SATURDAY, APRIL 22, 2017 11:00 AM**  
**CLOUDS HILL VICTORIAN HOUSE MUSEUM**

We will gather at 11:00am at Clouds Hill, 4157 Post Road in East Greenwich, RI. A private home, Clouds Hill is also a museum which opens to the public. Originally built as a wedding present for Elizabeth Slater on her marriage to Alfred Reed, Jr., the home has remained in the same family and is now owned by Elizabeth's great granddaughter, Anne. Anne's family tree includes many notable Rhode Island families, including ours! \$8. Following our tour and a brief meeting, we will have lunch at Besos Kitchen. RSVP by April 14 to 401-567-0088 or katemospaw@aol.com.

*Directions: From Rte. 95 take Exit 10/Route 117 East. Turn right onto Rte. 1 South/Post Road. Clouds Hill is about 1.5 miles – watch for the sign.*

**SATURDAY, MAY 20, 2017 10:45AM**  
**PROVIDENCE RIVER BOAT TOUR**

We will gather at 10:45am at The Providence River Boat Company dock at The Hot Club, 575 South Water Street in Providence, RI. We will discover the historic and contemporary milestones of Providence's waterways during this fun, informative, fully narrated tour. Explore the Providence River, Riverwalk, Waterplace Park and the Providence Harbor as the captain highlights historical, nautical, and architectural points of interest. Surfandsunshine.com lists this as one of "7 Must See Nautical Tours in the US" (and the only one in New England!). \$15. Following our tour we will proceed to the Cav Restaurant for brunch and a brief meeting.

*Directions: From Rte. 95 or Rte. 6 take the exit for Downtown Providence/Memorial Blvd. Continue on Memorial Blvd. along the river and take a left onto S Water St./US-44E. Look for the Hot Club on your right. Due to the highly limited number of spaces on this tour, RSVP by May 11 to 401-567-0088 or katemospaw@aol.com.*

**SATURDAY, JUNE 24, 2017 11:00 AM**  
**GREEN ANIMALS AND FOUNDERS BROOK PARK**

We will gather at 11:00am for a self-guided tour of Green Animals, 380 Cory's Lane in Portsmouth, RI and then proceed to nearby Founders Brook Park off Boyd's Lane. Green Animals is the oldest and northernmost topiary garden in the United States and contains over 80 pieces. It is owned and maintained by the Preservation Society of Newport County. \$12. Next we will drive to visit Founders Brook Park with its memorials to Anne Hutchinson and the Portsmouth Compact signed in 1638 where we will hold our annual meeting and enjoy a picnic. Although the park has "sitting stones" it is recommended that everyone bring a folding chair along with their lunch. RSVP by June 16 to 401-567-0088 or katemospaw@aol.com.

*Directions: From Rte. 95 take the exit for Rte. 195-S and continue to Exit 2 Warren/Newport. You will be on MA-136 briefly until it becomes RI-136. Continue on Rte. 136 taking a right onto Metacom Ave. Take a slight left onto Ferry St./RI-114. Continue on Rte. 114 taking a right onto West Main Rd. Take a right onto Cory's Lane and continue to Green Animals.*

# ROGER WILLIAMS FAMILY ASSOCIATION

Use order form on reverse or order online at [www.rogerwilliams.org](http://www.rogerwilliams.org)

## **DESCENDANTS OF ROGER WILLIAMS - VOL. I**

*The Waterman and Winsor Lines Through His Daughter Mercy Williams*

Waterman Line compiled by Dorothy Higson White; Winsor Line by Kay Kirlin Moore. This combined volume traces the descendants of Mercy Williams, Roger Williams' fourth child, through her marriages to Resolved Waterman and Samuel Winsor. Information on many early Rhode Island families is included, such as Angell, Arnold, Brown, Greene, Harris, Lippitt, Olney, Potter, Rhodes, Steere, Tillinghast, and Whipple. The book is hard-covered, fully indexed (including maiden names of spouses), and contains a complete bibliography for both Waterman and Winsor lines. Includes the 2003 Supplement: *Corrections and Additions To The Waterman Line* (see full description below).

Gateway Press, Inc. 1991. Index. 403 pp. **\$33.00 (\$29.00 plus \$4.00 S&H)**

## **DESCENDANTS OF ROGER WILLIAMS - VOL. I SUPPLEMENT**

*2003 Corrections & Additions To The Waterman Line*

Booklet includes additions and corrections which have been collected since research was completed on the Waterman Line for Volume I. Many Waterman interfamily relationships to others in the six Williams Lines are included, providing additional lines to Roger Williams. The booklet is soft-covered, fully indexed (including maiden names of spouses), and contains a complete bibliography.

2003. Index. 38 pp. **\$5.00 (\$4.00 plus \$1.00 S&H)**

## **DESCENDANTS OF ROGER WILLIAMS - VOL. II**

*The Hart Line Through His Daughter Freeborn Williams*

Compiled by Kay Kirlin Moore; edited by Dorothy Higson White. This volume traces the descendants of Freeborn Williams, Roger Williams' second child, through her marriage to Thomas Hart. Information on many early Rhode Island families is included, such as Arnold, Ayrault, Barker, Bates, Brenton, Brown(e), Clarke, Cranston, Greene, Howard, Shaw, Smith, Tanner, and Williams. The book is hard-covered, fully indexed (including maiden names of spouses), and contains a complete bibliography.

Braun-Brumfield. 1998. Index. 134 pp. **\$24.00 (\$20.00 plus \$4.00 S&H)**

## **DESCENDANTS OF ROGER WILLIAMS - VOL. III**

*The Sayles Line Through His Daughter Mary Williams*

Compiled by Dorothy Higson White. This volume traces the descendants of Mary Williams, Roger Williams' first child, through her marriage to John Sayles. Information on many early Rhode Island families is included, such as Brown, Carr, Clarke, Greene, Jenks, Mowry, Olney, Smith, Stafford, Whipple, Wightman, and Winsor. The book is hard-covered, fully indexed (including maiden names of spouses), and contains a complete bibliography.

Braun-Brumfield. 2002. Index. 516 pp. **\$31.00 (\$27.00 plus \$4.00 S&H)**

## **DESCENDANTS OF ROGER WILLIAMS - VOL. IV**

*Through His Son Joseph Williams*

Compiled by Elsie B. Williams. This volume traces the descendants of Joseph Williams, Roger Williams' sixth child, through six generations. Information on many early Rhode Island families is included, such as Angell, Arnold, Atwood, Ballou, Brown, Dyer, Gorton, Greene, Hines, Olney, Paine, Potter, Randall, Waterman, and Whipple. The book is hard-covered, fully indexed (including maiden names of spouses), and contains a complete bibliography.

2009. Index. 248 pp. **\$29.00 (\$25.00 plus \$4.00 S&H)**

## **DESCENDANTS OF ROGER WILLIAMS - VOL. V NEW!**

*Through His Son Daniel Williams*

Compiled by Elsie B. Williams. This volume traces the descendants of Daniel Williams, Roger Williams' fifth child, through six generations. Information on many early Rhode Island families is included, such as Angell, Brown, Colwell, Fisk(e), Hawkins, Knight, Olney, Potter, Tourtellot, Wheeler, and Whipple. The book is hard-covered, fully indexed (including maiden names of spouses), and contains a complete bibliography.

2014. Index. 133 pp. **\$29.00 (\$25.00 plus \$4.00 S&H)**

## **"ROGER WILLIAMS ASSOCIATION" PINS**

Our archivists discovered an old hub and die that had been used early in the 1900's to make a Roger Williams Family pin. We know the pin was made before 1906 when the Association was incorporated as Roger Williams Family Association. The pin has the initials RWA which stands for Roger Williams Association, the name of the organization from its inception until its incorporation. We had a number of these gold-plated brass pins made, about the size of a nickel with an attractive scalloped border and the initials RWA intertwined.

**\$10.00 (\$7.50 plus \$2.50 S&H)**

**ROGER WILLIAMS FAMILY ASSOCIATION  
ORDER FORM**

*Please make your check payable to "Roger Williams Family Association"*

**BOOK ORDERS**

**Complete this form and mail to:**

Roger Williams Family Assoc.  
PO Box 24  
East Greenwich, RI 02818

Name \_\_\_\_\_

Street \_\_\_\_\_

City \_\_\_\_\_ State \_\_\_\_\_ Zip \_\_\_\_\_

Qty \_\_\_\_\_ ***DESC. OF ROGER WILLIAMS - I: MERCY (Waterman/Winsor Lines)***  
***\$33.00 (\$29.00 plus \$4.00 S&H) (Includes Vol. 1 Supplement)***

Qty \_\_\_\_\_ ***DESC. OF ROGER WILLIAMS - II: FREEBORN (Hart Line)***  
***\$24.00 (\$20.00 plus \$4.00 S&H)***

Qty \_\_\_\_\_ ***DESC. OF ROGER WILLIAMS - III: MARY (Sayles Line)***  
***\$31.00 (\$27.00 plus \$4.00 S&H)***

Qty \_\_\_\_\_ ***DESC. OF ROGER WILLIAMS - IV: JOSEPH***  
***\$29.00 (\$25.00 plus \$4.00 S&H)***

Qty \_\_\_\_\_ ***DESC. OF ROGER WILLIAMS - V: DANIEL***  
***\$29.00 (\$25.00 plus \$4.00 S&H)***

-----  
**OTHER ORDERS**

**Complete this form and mail to:**

Frank B. Stevenson, Treas.  
Roger Williams Family Assoc.  
142 George Allen Road  
Chepachet, RI 02814

Name \_\_\_\_\_

Street \_\_\_\_\_

City \_\_\_\_\_ State \_\_\_\_\_ Zip \_\_\_\_\_

Qty \_\_\_\_\_ ***DESCENDANTS OF ROGER WILLIAMS - VOL. I SUPPLEMENT***  
***\$5.00 (\$4.00 plus \$1.00 S&H)***

Qty \_\_\_\_\_ ***"ROGER WILLIAMS ASSOCIATION" PIN***  
***\$10.00 (\$7.50 plus \$2.50 S&H)***

# WHY ROGER WILLIAMS' STATUE IS IN GENEVA

BY GLADYS S. BRAYTON

REPRINTED FROM APRIL 1965 BULLETIN

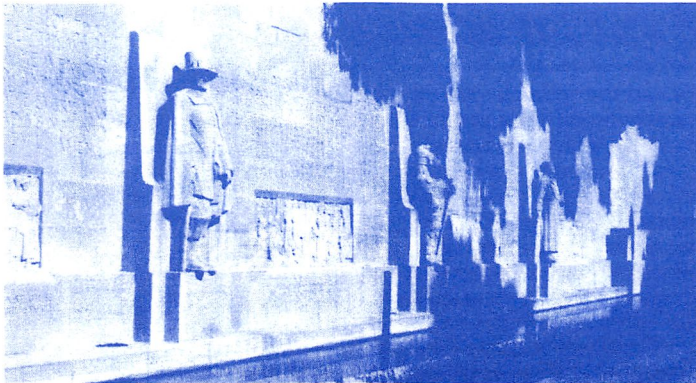
Many people have inquired why the founder of Rhode Island was honored by a statue in the far away city of Geneva, Switzerland.

In 1917, the beauty of the city of Geneva was enriched by the addition of a new monument, the International Monument of the Reformation. It took a most unusual form. At the foot of the old ramparts of the city there remained a portion of one of the former city walls. It was necessary but hardly a thing of beauty, until artists chose to face it with stone ornamented with statues relief, interspersed with panels of bas-relief. At the base of the wall a moat, flanked by a low garden, keeps the public in safe distance away from the statuary on a wide paved walk which forms a park known as the Promenade des Bastions.

This unique monument was designed to epitomize the history of the Reformation throughout the world. At the center of the wall is a group of figures, four historic statues of Calvin, Farel, Beze and Knox, pioneers of the Reformation. This central motif is flanked on either side by three single figures representing the men who were responsible for bringing ecclesiastical reform to the people of their respective countries. They were Gaspard de Coligny, the French Calvinist; William the Silent, Prince of Orange who brought about toleration in religion in Holland; Stephen Boeskey, the Hungarian, naturalized leader who secured freedom for the Protestants of Hungary; the Great Elector of Brandenburg whose protest against the action of the diet of 1529 declaring all changes in religion unlawful, and gave rise to the name Protestant; Oliver Cromwell who labored for an alliance of all Protestant nations of Europe; and Roger Williams who established the first commonwealth in America which granted religious freedom.

The statue of the latter stands first on the left of the central group. Between these statues on the wall itself are panels depicting some of the episodes of the heroic times of Calvinism, each with its appropriate inscription. Above the panels are the French words meaning, "Light After Darkness."

France, Germany, Switzerland, Scotland, Holland, England and the United States joined in raising this International Monument of the Reformation to celebrate the 40th anniversary of the peak of the movement. Henri Bouchard of France and Paul Landowski of Poland were the sculptors of the main group of pioneers and then divided the single figures and panels between them.



*Statue of Roger Williams on the International Monument of the Reformation in Geneva*

It was Henri Bouchard who made the statue of Roger Williams. He had commenced his art education under the tutelage of his father, a wood carver. Later he attended the École des Beaux-Arts, where he won the Prix de Rome in 1891. His work shows the work of the great sculptor Rodin. He did many labor subjects. One of these, the Blacksmith, may be seen in the Metropolitan Museum of Art in New York City.

For us in Rhode Island, Bouchard's masterpiece will always be his statue of Roger Williams preaching the doctrine of freedom of worship, part of the International Monument to the Calvinist Reformation.

*From Wikipedia...*

The Wall is in the grounds of the University of Geneva, which was founded by John Calvin, and was built to commemorate the 400th anniversary of Calvin's birth and the 350th anniversary of the university's establishment. It is built into the old city walls of Geneva, and the monument's location there is designed to represent the fortifications', and therefore the city of Geneva's, integral importance to the Reformation.

Inaugurated in 1909, it was the culmination of a contest launched to transform that part of the park. The contest, which involved 71 other proposals, received entries from across the world. The winning design was put forward by four Swiss architects: Charles Dubois, Alphonse Laverrière, Eugène Monod, and Jean Tailens (whose other design came third). The sculptures were then created by two French sculptors: Paul Landowski and Henri Bouchard.

During the Reformation, Geneva was the centre of Calvinism, and its history and heritage since the sixteenth century has been closely linked to that of Protestantism. Due to the close connections to that theology, the individuals most prominently depicted on the Wall were Calvinists; nonetheless, key figures in other theologies are also included.

At the centre of the monument, four 5m tall statues of Calvinism's main proponents are depicted: Theodore Beza (1519-1605), John Calvin (1509-1564), William Farel (1489-1565), John Knox (c.1513-1572).

To the left (facing the Wall, ordered from left to right) of the central statues are 3m tall statues of: William the Silent (1533-1584), Gaspard de Coligny (1519-1572), Frederick William of Brandenburg (1620-1688).

To the right (ordered from left to right) are 3m tall statues of: Roger Williams (1603-1684), Oliver Cromwell (1599-1658), Stephen Bocskay (1557-1607).

Along the wall, to either side of the central statues, is engraved the motto of both the Reformation and Geneva: *Post Tenebras Lux* (Latin for After darkness, light). On the central statues' pedestal is engraved a Christogram: IH̄X̄

The monument gave inspiration to one of the most important 20th century Hungarian poems, written by Gyula Illyés in 1946 under the title, "Before the Monument of Reformation in Geneva."

---

*President's Letter, cont'd*

Roger created Charters with England that for the first time in history guaranteed religious liberty to all citizens of the new Colony... Protestants, Catholics, Jews, Quakers as well as Atheists. It is a tribute to Roger Williams that the founders of our nation more than two hundred years ago enshrined his doctrines in our "Bill of Rights" and "Declaration of Independence." That can be traced back to the hard fought freedoms earned by men like Roger Williams. In today's climate of change, we should be steadfast in our determination to preserve those hard fought for freedoms.

Sincerely,  
David Hazard Wordell, President  
Roger Williams Family Association  
September 2016



# NEW MEMBERS

## 2015-2016

*Jonathan Blake	North Easton, MA	<i>Joseph</i>
*Roger H. Blake	North Easton, MA	<i>Joseph</i>
*Denise E. Calderone	Boca Raton, FL	<i>Mary</i>
Sandra S. Corricello	Broomfield, CO	<i>Mercy Winsor</i>
*Mary N. Cousins	Miami Shores, FL	<i>Mary</i>
Frances D. Denoncourt	Florence, AZ	<i>Daniel</i>
*Brian Gay	Williston Park, NY	<i>Joseph</i>
*Michael Gay	Williston Park, NY	<i>Joseph</i>
*Patrick Gay	Williston Park, NY	<i>Joseph</i>
*Melodie Hebert	North Scituate, RI	<i>Daniel</i>
*Gregory R. Hunt	Boca Raton, FL	<i>Mary</i>
*Susan M. Lamoureux	Methuen, MA	<i>Mercy Winsor</i>
Joanne D. Miley	Williamsburg, VA	<i>Mercy Winsor</i>
*Catherine M. Mitchell	Boca Raton, FL	<i>Mary</i>
*Alexander T. Pelan	Brooklyn, NY	<i>Daniel</i>
*Brian H. Pelan	Harwich, MA	<i>Daniel</i>
*Caitlin B. Pelan	Miami, FL	<i>Daniel</i>
*Christopher S. Proctor	Santa Barbara, CA	<i>Mary</i>
Nancy J. Swigart	Covington, OH	<i>Mercy Winsor</i>
*Emily Szalkowski	Westbury, NY	<i>Joseph</i>
*Lauren Szalkowski	Westbury, NY	<i>Joseph</i>
*Heather C. Tuller	Chesterfield, NJ	<i>Mercy</i>
*Alfred A. Williams	Narragansett, RI	<i>Daniel</i>
*Charles J. Williams	Reading, MA	<i>Mary</i>
* <i>Life Member</i>		

## IN MEMORIAM

Roger Hope Brown	24 November 2014	<i>Mercy Winsor, Joseph</i>
Edwin Munroe Knights	19 September 2015	<i>Mercy Winsor</i>
Florence R. Patenaude	23 May 2015	<i>Mercy Waterman</i>
William I. Randall	4 March 2012	<i>Mercy Winsor</i>
Marian Callow Ranney	4 August 2012	<i>Mary, Mercy Winsor, Daniel, Joseph</i>
Doris L. Rubsam	November 2011	<i>Mary</i>

### HELP US FIND LOST MEMBERS

*In recent years, bulletins for the a number of members have been returned with no forwarding address. We would appreciate your looking through the list of these members that we have posted on our website and providing address information for anyone you may know. Thank you!*

*See list at [www.rogerwilliams.org/address-unknown.htm](http://www.rogerwilliams.org/address-unknown.htm)  
Send address information to [database@rogerwilliams.org](mailto:database@rogerwilliams.org)*

# BEGINNING OUR 128TH YEAR

## 2016-2017

### OFFICERS

<i>President</i> .....	David H. Wordell, Sr. 509 New London Rd., Salem, CT 06420; president@rogerwilliams.org
<i>1st Vice President</i> .....	Kathan M. Lambert 415 Wallum Lake Rd., Pascoag, RI 02859; 401-567-0088; vice-president@rogerwilliams.org
<i>2nd Vice President</i> .....	<i>Vacant</i>
<i>Recording Secretary</i> .....	Patricia A. Woodard-Harmon 74 Spruce St., Warwick, RI 02886; 401-737-3142, secretary@rogerwilliams.org
<i>Corresponding Secretary</i> .....	Anne (Williams) Crocker 100 Arthur St. - Apt 103, Cranston, RI 02910; 401-467-7594
<i>Treasurer</i> .....	Frank B. Stevenson 142 George Allen Rd., Chepachet, RI 02814; 401-568-4016, treasurer@rogerwilliams.org
<i>Registrar</i> .....	Barbara (Wright) McCurdy PO Box 717, Portsmouth, RI 02871; 401-682-2404; registrar@rogerwilliams.org
<i>Historian</i> .....	Allison (Greene) Morrison 384 West Allenton Rd., No. Kingstown, RI 02852; historian@rogerwilliams.com

### DIRECTORS

<i>Director, Past President</i> .....	Dr. Clifford W. Brown, Jr. 180 Brown St., Providence, RI 02906
<i>Director, Past President</i> .....	Mary (French) Channing PO Box 94, Wilton, CT 06897; 203-834-0545
<i>Director, Past President</i> .....	Col. Robert Allen Greene PO Box 137, E. Greenwich, RI 02818; 401-884-5929, 401-884-7530
<i>Director, Past President</i> .....	Frank B. Stevenson 142 George Allen Rd., Chepachet, RI 02814; 401-568-4016
<i>Director, Past President</i> .....	Dorothy (Higson) White 600 Valley Rd. - Apt. 102, Middletown, RI 02842
<i>Director</i> .....	Gladys I. Bailey 2068 South County Tr., East Greenwich, RI 02818
<i>Director</i> .....	Janis (Frigault) Stevenson 142 George Allen Rd., Chepachet, RI 02814; 401-568-4016

### COMMITTEE CHAIRPERSONS

<i>Auditor</i> .....	Raymond L. Hilton, Jr.
<i>Chaplain</i> .....	Anne (Rowley) Prokopowicz 168 Forest Ave., Cranston, RI 02910; 401-785-2512
<i>Membership Database</i> .....	Janis (Frigault) Stevenson 142 George Allen Rd., Chepachet, RI 02814; database@rogerwilliams.org
<i>Program</i> .....	Kathan M. Lambert 415 Wallum Lake Rd., Pascoag 02859; 401-567-0088
<i>Publicity</i> .....	Susan (Wordell) Jacquet 40 School St., Newport, RI 02840; 401-741-7526
<i>Sunshine</i> .....	Anne (Williams) Crocker 100 Arthur St. - Apt 103, Cranston, RI 02910; 401-467-7594
<i>Web Site/Publications</i> .....	Janis (Frigault) Stevenson 142 George Allen Rd., Chepachet, RI 02814; 401-568-4016