

THE ROGER WILLIAMS FAMILY ASSOCIATION

2007-2008 No. 94

Incorporated January 30, 1906
Providence, Rhode Island
www.rogerwilliams.org



A MESSAGE FROM THE PRESIDENT

Dear Cousins and Friends:

Greetings to all of you throughout the country and the world, including the 44 new members of the Association. It is an honor to serve as your new president.

Keeping alive the memory of Roger Williams, his accomplishments, and his deep convictions is always important, but at no time more so than the present. We remember him for being a founder of Rhode Island and its first governor; for being instrumental in starting the First Baptist Church in America and serving as its first pastor; for being the first publishing anthropologist in North America, respectfully studying the culture of Native Americans and producing the first dictionary of their language; and most of all for his seminal arguments in support of religious freedom and toleration and the separation of religion from politics.

In a world where there are those who would invoke religion as a justification for doing evil deeds and where others would stigmatize people for their exercise of peaceful and sincere religious practices, we are constantly reminded of the importance of our ancestor's message: as long as communicants respect the legitimate needs of civil order and civic decency, any sincere religious belief or practice should be allowed and given respect, however much one may disagree with it -- a principle, incidentally, endorsed by George Washington in his famous letter to the Congregation of the Touro Synagogue in Newport while on a visit to Rhode Island. Roger Williams himself had very strong religious beliefs and was not afraid to express them -- nor respectfully to criticize the religious beliefs of others -- but he always strongly affirmed the need for each individual to seek the Truth in his or her own way.

We have planned a wonderful series of programs for this coming year as outlined in the CALENDAR, and we would love to have you join us. For those of you who live at a distance, a vacation trip to Rhode Island incorporating attendance at one of our tours or programs might be both enjoyable and instructive.

We are also happy to report that Elsie Williams and Trish Woodard-Harmon continue their marvelous work on Book Four (descendants of Joseph) and Book Five (descendants of Daniel), and we hope to have at least the first of these ready for publication in the near future, "if the weather stays cool and the cat behaves itself."

Finally, our thoughts and prayers are always with those brave and dedicated men and women in uniform who serve our communities and our country in a world of recurrent aggression, danger, disease, and catastrophe.

Respectfully,
Clifford W. Brown, Jr., President
Providence, Rhode Island
August 1, 2007

"Additions & Corrections - Descendants of Roger Williams: Book III, Sayles Line" is now available online at www.rogerwilliams.org.

CALENDAR

September 2007 - June 2008

SATURDAY, SEPTEMBER 22, 2007 - 12:00 PM

Cruise of Narragansett Bay & Newport Harbor

This three hour cruise will depart from Jamestown and tour lower Narragansett Bay and Newport Harbor. We will see area lighthouses and many other nautical sights on the bay. Please bring a lunch; drinks may be bought on board at the cash bar. Space is limited. Call Dot White at (401) 246-0246 to reserve your seat. Price will be determined based on the number of responses.

Directions: From Providence, Rte. 95S to Exit 9/Rte. 4. Continue south (Rte. 4 becomes Rte. 2 and then Rte. 1) to the Rte. 138E exit. Follow Rte. 138E over the Jamestown-Verrazano Bridge. Continue on Rte. 138 to the Jamestown exit sign just before the Newport Bridge toll plaza. Take the exit and continue for 1 mile along the waterfront to the village and marina.

SATURDAY, OCTOBER 20, 2007 - 8:30 AM

Foliage Train Excursion Along the Blackstone, French & Quinebaug Rivers

Meet in the Ann & Hope parking lot, rain or shine, for a 9:00 AM departure to begin a day-long foliage excursion. The train will travel along the Blackstone, French and Quinebaug Rivers to Putnam, CT, arriving at 11:00. We will lunch in Putnam, conduct our meeting, and tour the restored historic sections of the city, which will be holding an art and music festival that day. We will leave at 2:00 for the return trip and arrive back in Cumberland at 4:00. Price: \$30 for adults (meal not included); \$15 for children under 16. Reservations are required; call Frank Stevenson at (401) 568-4016 no later than September 20. (Late reservations may be possible, but we cannot guarantee them.)

Directions: From Providence, Rte. 146N to Breakneck Hill Road (Rte. 123) exit. East on Breakneck Hill Road to Rte. 122. Left onto Rte. 122 (Lonsdale Avenue which becomes Mendon Road). Right on Ann & Hope Way, cross the railroad tracks, then right into Ann & Hope parking lot. Please park in designated areas.

SUNDAY, NOVEMBER 11, 2007 - 11:00 AM

Tour of Touro Synagogue

Members and guests are invited to join us on a tour of Touro Synagogue at 85 Touro Street in Newport, RI, the nation's oldest synagogue that is still in operation. This architectural jewel was designed by Peter Harrison, America's most famous 18th century architect and is considered to be his finest effort. Admission is \$5 per person for group tour. After the tour, the group will dine at a nearby restaurant.

Directions: From Providence, Rte. 95S to Exit 9/Rte. 4. Continue south (Rte. 4 becomes Rte. 2 and then Rte. 1) to the Rte. 138E exit. Follow Rte. 138E over the Jamestown-Verrazano Bridge and then the Newport Bridge (\$2 toll). Take the first exit off the Newport Bridge, marked "Downtown Newport." Bear right at end of ramp and go through first traffic light. At second light, bear left. Go through several stop signs. At next light ("Pier One Imports" will be on your right), turn left. This is Touro Street. Go through next intersection (Spring Street). The Synagogue is second building on left.

SATURDAY, DECEMBER 8, 2007 - 1:30 PM

Holiday Celebration

Members and guests are cordially invited to meet at Marilyn & Clifford Brown's home at 180 Brown Street, Providence, RI, for a festive seasonal occasion featuring a brief business meeting, a musical program, a Christmas carol sing-along, and a delicious array of refreshments.

Directions: From Rte. 95 north or south, take Rte. 195 to the Wickenden Street exit; turn left onto Wickenden Street; after four blocks, turn left onto Hope Street; proceed about a mile and turn left at light onto Lloyd Avenue; go two blocks and turn right onto Brown Street; proceed one block; house is across Keene Street on your left. Parking is legal on the south side of Brown Street and on Keene Street. For directions from other locations, please call (401) 331-1253.

SATURDAY, MARCH 15, 2008 - 10:45 AM

Tour & Presentation at Old Colony Historical Society Museum & Library

We will tour the museum at 66 Church Green in Taunton, MA, then gather for a presentation by archivist Andrew D. Boisvert. Housed in the 1852 Bristol Academy building designed by Richard Upjohn, the museum contains extensive collections representing the history of the Taunton region of Massachusetts, including special collections and many important items. The library and archives contain major genealogical holdings, as well as local history materials. Members of the Old Colony Historical Society have been asked to join us for this event. Following a short business meeting, we will lunch at the Off Broadway Diner at 1:30 PM. Please contact Trish Woodard-Harmon (401) 737-3142 by March 8, 2008 if you plan to attend.

Directions: From Providence, Rte. 195E into Massachusetts to Fall River. Take first exit off the Braga Bridge to Rte. 79N. Follow signs for Rte. 79N to Taunton. Rte. 79 merges with Rte. 24N. Follow Rte. 24N to Exit 12/Rte. 140. Take Exit 12B/Rte. 140N into Taunton. At the traffic light where Summer St., Spring St. and Church Green intersect, turn right onto Church Green. The OCHS is at 66 Church Green, third building on the right. Parking is available in front lot or on side streets.

Directions to Off Broadway Diner: From OCHS, head southwest on Church Green toward Rte. 140/Summer Street. Turn right onto Rte. 140/Summer Street and follow. Turn left at Court Street/Rte. 138S/Rte. 140N/US 44W and follow Rte. 138 S/US 44W.

SATURDAY, APRIL 19, 2008 - 11:00 AM

Tour of Haffenreffer Museum

Members and guests are invited to explore the richness and diversity of the world's cultures at Brown University's Haffenreffer Museum of Anthropology at 300 Tower Street, Bristol, RI. A treasure house of 100,000 fascinating artifacts from the Native peoples of the Americas, Africa, Asia, and the Pacific, the Haffenreffer features four intimate galleries, a shop, and lovely grounds. The Museum originated with the private collection of Rudolf F. Haffenreffer, and remains where Haffenreffer built it, along the shores of Mt. Hope Bay on the Mount Hope Grant, the former headquarters of Metacom, or King Philip, a 17th-century Wampanoag sachem. Admission is \$4.50 per person for the guided tour lasting about one hour. After the tour, the group will dine at a nearby restaurant.

Directions: From Providence, Rte. 195E to MA Exit 2 (Rte. 136 toward Newport, RI). Go south on Rte. 136 for 7.5 miles. Turn left at the Haffenreffer Museum sign onto Tower Street. The Museum is 1.4 miles from Rte. 136.

SUNDAY, MAY 4, 2008 - 11:00 AM

Founders' Day and Tour of Botanical Gardens at Roger Williams Park

We will observe Founders' Day at First Baptist Church in America, which is located at 75 North Main Street, Providence, Rhode Island. Following the church service and a time for coffee and a tour of the historic Church for those interested, we will meet at 1:00 at the Danforth Education Center in Roger Williams Park (just up a slight hill from the Botanical Gardens), where we will hold a meeting and enjoy a picnic lunch (self-catered). The Botanical Gardens are just below the Educational Center, and we will have until 4:00 to enjoy the gardens. Our group rate is \$1.50 per person.

Directions: From Providence, take Route 95S; exit to Elmwood Avenue and follow signs to Roger Williams Park. Upon entering park, follow signs to the Botanical Gardens.

SATURDAY, JUNE 21, 2008 - 11:00 AM

Annual Meeting and Presentation by Ranger John McNiff

Members and guests will meet at the Roger Williams National Memorial at 282 North Main Street in Providence for a presentation by Ranger John McNiff. Lunch and the Annual Business Meeting will follow Ranger McNiff's talk. Please bring a picnic lunch and a lawn chair for lunch on the park grounds.

Directions to the Memorial: From Route 95N, take the State Office exit. Go straight across Orms Street at end of exit. Turn left onto Smith Street. Turn right at bottom of hill onto Canal Street, then immediate left into Memorial's parking lot.

BETSY WILLIAMS AND THE CREATION OF ROGER WILLIAMS PARK

Excerpted from an address by Miss Emily H. Paine, delivered before the Roger Williams Family Association, November 1, 1945.

Having been acquainted with at least five persons who knew Betsy Williams personally, I have always had an interest in her. To refresh our memories on her descent from Roger Williams, she was descended on her mother's side in this manner: Roger, Joseph, Joseph, Mirabah who married Jabez Brown, Mercy Brown [who] married Stephen Waterman, Mary Waterman [who] married James Williams, [the last two being] Betsy's parents. On her father's side, her line was Roger, Joseph, James, Nathaniel, James, and then Betsy. So she was in the sixth generation on her father's side and the seventh on her mother's side.

Betsy has been described as being of medium height and physique ... [and] noted for her lovely Titian red hair.... Although she had considerable money and much land, she lived in a very humble manner. Her sister Rhoda, who was blind in her later years, lived with Betsy and died before she did. ... Their ways of living seemed odd to others, but suited them. They each had their own dishes, one had white sugar, the other brown, one would sweep one half of a room, and the other the rest of it, and so on. They made corn husk mats, and sewed straw.

In Betsy's last illness she was attended by a Mrs. Stone, mother of Mr. David Stone, of Auburn. Mr. Stone's parents started housekeeping in the house on Pontiac Avenue (where Betsy died), and later lived in the Park Cottage just before it was taken over by the City. The last occupant of the cottage was Mr. James Hathaway, at one time Superintendent at the Park. He lived there until 1881.

In 1877 a Mr. Joseph Hayward of Pawtuxet bought Betsy's old sleigh from my grandmother, Mrs. Philip S. Paine, and for many years used to drive it to the city at least once a season. Later he gave it to the Park. Each sleigh bell had the initials "B.W." on it. Betsy used to borrow a horse from my grandmother when she used it.

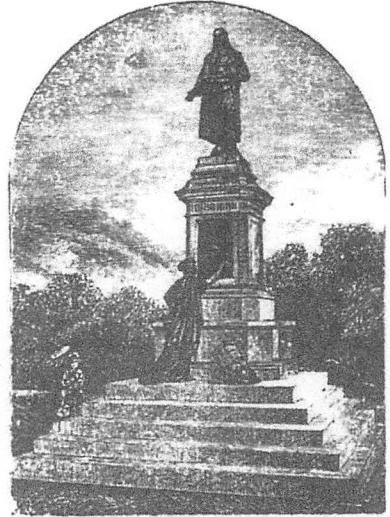
Joseph Cooke, who owned considerable land in the vicinity of Adelaide Avenue, and adjoining hers on the north, was a strong factor in persuading Betsy to leave her farm to the City for a Park. ... Mr. Cooke realized how a nearby park would raise the value of his land. The City Council did not favor the idea very much, but Mr. William Daboll, one of its members, persuaded them to accept it in 1872. The farm was valued at about \$40,000.

The land, comprising the original part of the Park, about 100 acres, came in the possession of Joseph Williams about 1662.



Betsy Williams Cottage

He had a large house situated about where Depew Street is now, just off Elmwood Avenue. It has not been in existence for many years. His place remained as farm land, belonging to the family until Betsy died. In her will she left it to the City of Providence, to be used for public purposes only, never to be used for punitive or reformatory purposes, or [for a] hospital for any contagious diseases. No slaughter house, piggery, bone or fat boiling establishment could be placed there. It was to be named Roger Williams Park, or Roger Williams Cemetery, or some similar name, with the provision that a monument costing not less than \$500 be erected to the memory of Roger Williams in the family cemetery, and that the City maintain a proper fence, and keep the grounds in the enclosure in good order. The statue, near the Betsy Williams cottage, was designed by Franklin Simmons of Maine, and was unveiled in 1877. It shows a bronze figure representing Roger Williams, holding a book in his left hand with the words "Soul Liberty" "1636" inscribed on it, and with his right hand spread open as if making a gesture as he declaimed those words. On the marble base is the bronze figure of a woman representing "Liberty," [some also say it is Clio, muse of History] writing the words "Roger Williams, 1636."



Roger Williams Monument

On the 50th anniversary of Betsy's death in 1921, exercises were held in the Park, with the then mayor Gainer and members of the Roger Williams Family Association participating. ...

Betsy is buried in the family plot in the Park with other members of her immediate family.

Roger Williams Park today is one of the principal recreational assets of the City of Providence. It was landscaped by the famous Frederic Law Olmstead, and has a museum of natural history, a Planetarium, a Zoo, and other recreational facilities. About two dozen Williams descendants in addition to Betsy are buried in the family plot mentioned above.

Emily Paine, author of the above, was a very faithful member of the Roger Williams Family Association. She was an accomplished cellist; her sister Bessie was an accomplished pianist. On many occasions, and especially at the Christmas parties, they provided delightful music at meetings of the Association.

Lineal descendants of Roger Williams and their spouses are eligible to join the Roger Williams Family Association. Dues are \$5.00 for Annual Membership or \$50 for Life Membership. To request an application, please contact our Registrars or our Corresponding Secretary. Contact information is available on the back cover of this Bulletin. Application forms are also available on our web site. Please note that references are REQUIRED. Incomplete applications will be returned.

NEW MEMBERS

2006-2007

*Russell R. Allen	Dighton, MA	<i>Mercy Waterman</i>
Daryl K. Bean	Oviedo, FL	<i>Joseph</i>
*Dianne Bean	Winter Park, FL	<i>Joseph</i>
Dawn M. Bechtold	Jefferson, NH	<i>Daniel</i>
*Caroline D. Bell	Staunton, VA	<i>Freeborn</i>
Dennis J. Berry	Mead, NE	<i>Mary</i>
Lois Ann Brush	Danielson, CT	<i>Mary</i>
*Roger H. Burgess	South Lyon, MI	<i>Mercy Winsor</i>
*Leslie Anne Bykonen	Lacey, WA	<i>Mercy Waterman</i>
*Joan Bykonen	Lacey, WA	<i>Mercy Waterman</i>
*Donna Campopiano	Pawtucket, RI	<i>Mercy Winsor</i>
*Christopher C. Child	Boston, MA	<i>Mercy Winsor</i>
*James W. Clark	Port St. Lucie, FL	<i>Joseph</i>
*Meriweather Clark-Connors	Elmsford, NY	<i>Joseph</i>
George T. Cranston	North Kingstown, RI	<i>Freeborn</i>
*Kelsey Michelle Donnaud	Gonzales, LA	<i>Mercy Winsor</i>
Kathleen Emmett	Centerville, UT	<i>Mercy Waterman</i>
Mildred C. Farrell	Foster, RI	<i>Daniel</i>
*Rev. Dr. Edmund W. Fisher	Claremont, CA	<i>Mercy Waterman</i>
*Rosemary K. Gerace	Manlius, NY	<i>Joseph</i>
*Douglas Ellsworth Haslam	Rockville, MD	<i>Mercy Waterman</i>
Molly J. Jett	Cucamonga, CA	<i>Freeborn</i>
Wendy C. Jett	Cucamonga, CA	<i>Freeborn</i>
Charles H. Jett	Cucamonga, CA	<i>Freeborn</i>
Edward Kipp	Orleans, Ontario, Canada	<i>Mary</i>
*Cynthia G. Knight-Palazzo	Griswold, CT	<i>Daniel</i>
Eleanor E. Langlois	Venice, FL	<i>Mary</i>
*Matthew M. Laun	Cheektowaga, NY	<i>Mercy Waterman</i>
*William J. Lawson	Deposit, NY	<i>Joseph</i>
*John Konrad Lawson	Ontario, NY	<i>Joseph</i>
*Melissa McGinnis	Plainsboro, NJ	<i>Mary</i>
*Sandra L. Nesbitt	Newton Square, PA	<i>Mary</i>
*Cynthia Palozzo	Griswold, CT	<i>Daniel</i>
Michael W. Pritzker	Winter Park, FL	<i>Joseph</i>
Joshua W. Pritzker	Winter Park, FL	<i>Joseph</i>
*Patricia Savage	Honeoye Falls, NY	<i>Joseph</i>
*Mikayla Silva	Taunton, MA	<i>Mercy Waterman</i>
*David M. Smith	Westport, CT	<i>Mercy Winsor</i>
Everett H. Wilbur	Lincoln, RI	<i>Mary</i>
Esther L. Wilbur	Lincoln, RI	<i>Mercy Winsor</i>
Lester E. Williams	Stuart, FL	<i>Mercy Waterman, Joseph</i>
Tracey A. Williams	Warwick, RI	<i>Mercy Waterman, Joseph</i>
Terence D. Williams	Jersey City, NJ	<i>Mercy Waterman, Joseph</i>
*Peter D. Williams	Chepachet, RI	<i>Joseph</i>
* <i>Life Member</i>		

IN MEMORIAM

Lucy Hazen Barnes	1 July 2006	<i>Mary, Joseph</i>
Sarah Shirley Greenhalgh	20 February 2007	<i>Mary, Mercy Waterman/Winsor</i>
Rosalys Haskell Hall	2006	<i>Mary</i>
Elisabeth Hilton-Cohen	6 January 2007	<i>Freeborn</i>
Judith A. Hurst	24 February 2007	<i>Mary</i>
Coman Leavenworth	31 December 2006	<i>Mercy Winsor</i>
Ruth A. Serozynsky	27 December 2006	<i>Mary, Mercy Winsor</i>

BEGINNING OUR 116TH YEAR

2007-2008

OFFICERS

<i>President</i>	Dr. Clifford W. Brown, Jr. 180 Brown St., Providence, RI 02906
<i>1st Vice President</i>	Mrs. Mary A. Channing PO Box 94, Wilton, CT 06897
<i>2nd Vice President</i>	Mrs. Barbara (Wright) McCurdy PO Box 717, Portsmouth, RI 02871; 401-682-2404
<i>Recording Secretary</i>	Mrs. Patricia A. Woodard-Harmon 74 Spruce St., Warwick, RI 02886; 401-737-3142, secretary@rogerwilliams.org
<i>Corresponding Secretary</i>	Miss Gladys I. Bailey 2153 South County Tr., East Greenwich, RI 02818; 401-884-4988
<i>Treasurer</i>	Mr. Frank B. Stevenson 142 George Allen Rd., Glocester, RI 02814; 401-568-4016, treasurer@rogerwilliams.org
<i>Registrars</i>	Mrs. Elsie (Bushnell) Williams, Mrs. Anne (Williams) Crocker 35 Hodsell St., Cranston, RI 02910; 401-467-7594
<i>Historian</i>	Mrs. Barbara (Wright) McCurdy PO Box 717, Portsmouth, RI 02871; 401-682-2404, historian@rogerwilliams.org

DIRECTORS

<i>Director, Past President</i>	Mr. Walter H. Covell 47 Bowden Ave., Barrington, RI 02806; 401-245-6279
<i>Director, Past President</i>	Col. Robert Allen Greene PO Box 137, E. Greenwich, RI 02818; 401-884-5929, 401-884-7530
<i>Director, Past President</i>	Mr. Bruce Penniman 7 Winterberry Ln., Rehoboth, MA 02769; 508-252-9798
<i>Director, Past President</i>	Mr. Frank B. Stevenson 142 George Allen Rd., Glocester, RI 02814; 401-568-4016
<i>Director</i>	Mrs. Janis (Frigault) Stevenson 142 George Allen Rd., Glocester, RI 02814; 401-568-4016
<i>Director, Past President</i>	Mrs. Dorothy (Higson) White 15 Frederick Dr., Barrington, RI 02806; 401-246-0246
<i>Director</i>	Mr. Everett O. White 15 Frederick Dr., Barrington, RI 02806; 401-246-0246

COMMITTEE CHAIRPERSONS

<i>Auditor</i>	Mr. Raymond L. Hilton, Jr.
<i>Chaplain</i>	Mrs. Anne (Williams) Crocker 35 Hodsell St., Cranston, RI 02910; 401-467-7594
<i>Lineage Book</i>	Mrs. Dorothy (Higson) White 15 Frederick Dr., Barrington, RI 02806; 401-246-0246, lineage@rogerwilliams.org
<i>Membership Database</i>	Mr. Frank B. Stevenson 142 George Allen Rd., Glocester, RI 02814; 401-568-4016, database@rogerwilliams.org
<i>Program</i>	Mrs. Mary A. Channing PO Box 94, Wilton, CT 06897
<i>Publicity</i>	Mr. Frank B. Stevenson 142 George Allen Rd., Glocester, RI 02814; 401-568-4016
<i>Sunshine</i>	Mrs. Anne (Williams) Crocker 35 Hodsell St., Cranston, RI 02910; 401-467-7594
<i>Trust</i>	Miss Gladys I. Bailey
<i>Web Site/Publications</i>	Mrs. Janis (Frigault) Stevenson 142 George Allen Rd., Glocester, RI 02814; 401-568-4016